



Connect-IT – Integration made Simpler and Faster...

Companies worldwide invest into Enterprise Information Systems software such as ERP, Supply Chain Management (SCM), CRM and other Business Intelligence (BI) software to streamline their business processes and maximize their productivity. What the ERP and other software vendors often do not address is how these disparate software systems would collaborate with each other. Especially if these systems are from diverse vendors or run in different platforms, the Value from these software systems can only be realized if they appropriately communicated with each other. Connect-IT is a graphical, easy-to-use, Enterprise Application Integration tool which can be effectively utilized to map data and processes between disparate software systems. Using Connect-IT, one can seamlessly integrate, say, an ERP solution with a Business Intelligence software to communicate data back and forth in real time or near real time.

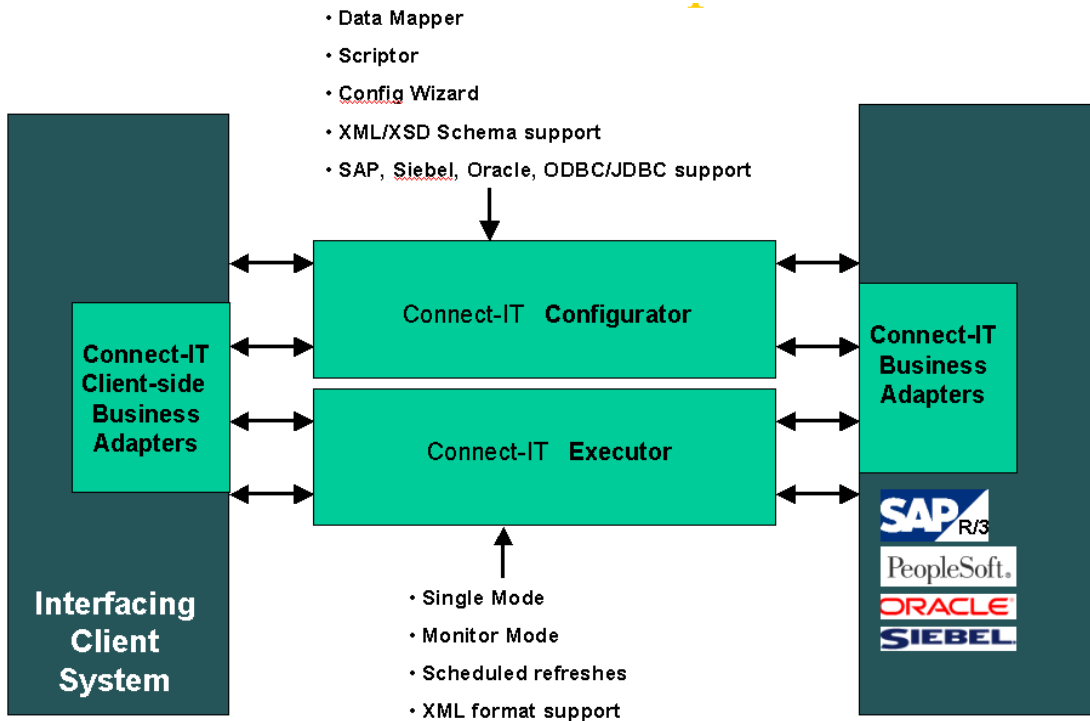
An important challenge for any Organization is to preserve the integrity of the business data and information that they spend millions of dollars storing; to prevent the data from becoming obsolete in content and format.

Data spread across disparate Enterprise Information Systems has become so common that even ERP giants have stopped arguing against the philosophy of maintaining business data across Software Solutions supplied by several vendors.

So it is no more uncommon to find companies invest into Supply Chain Management (SCM) solutions, CRM solutions, Business Intelligence (BI) software, Online Analytical Processing (OLAP) tools, etc., apart from their ERP solution. It is also most likely that these software systems were purchased from different software vendors.

For example, a company may choose for its need, an ERP solution provided by SAP, while preferring software by a third-party vendor for their e-procurement solution or their collaborative logistics solution. Now synchronizing the data across these diverse systems is required to keep the data “in the same page” across the Enterprise. If this is not done periodically, there is little meaning keeping all these software solutions and all the data.

Connect-IT provides two tools, which make the process of integration of data across several data sources simpler, quicker and cheaper. The Data Mapper is a GUI-based mapping tool which can be used to map data between different data sources, such as between two different Enterprise Information Systems (EIS), say SAP and Siebel. The Executor uses the mapping information from the Data Mapper to actually perform the synchronization of data between the two software systems. The executor provides options to schedule synchronization calls, perform bulk updates, provide data files in XML format, etc.



Connect-IT is a graphical Enterprise Integration Tool (EAI) and an Extraction, Transformation and Loading (ETL) Utility, which can be used to intelligently map data and processes across disparate Enterprise Systems.

Connect-IT provides an easy-to-use Graphical, drag-and-drop user interface to map the fields of data between different data sources such as SAP, Oracle, Siebel, ODBC / JDBC and XML data sources.

Connect-IT provides the following features:

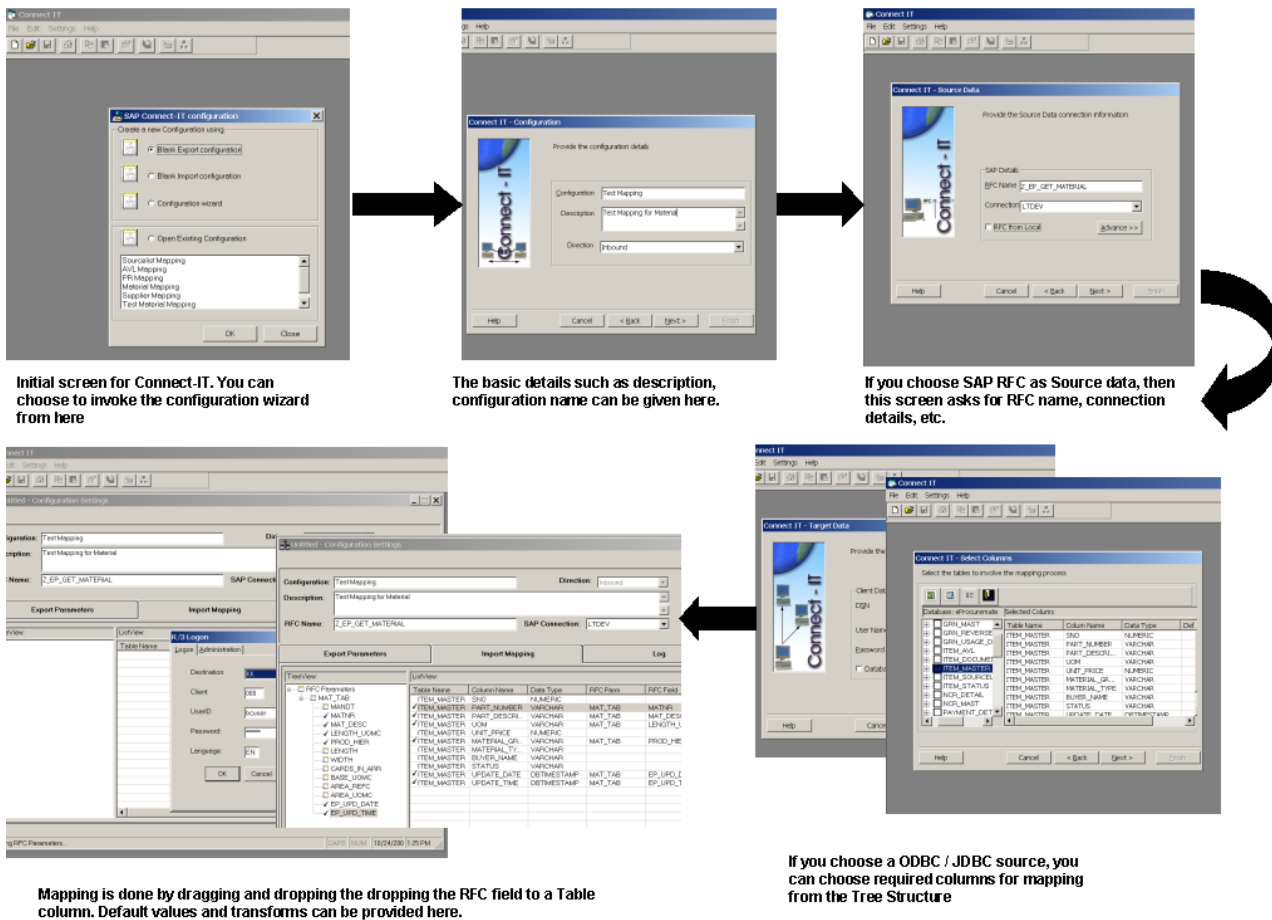
- Integrates different Enterprise Systems such as ERP, CRM, SCM solutions
- Can be used to integrate SAP with web-based Internet or Intranet systems
- Drag-and-drop interface to easily map metadata
- Provides Intelligent Data Mapping with options to provide rules for data transforms, scripting, etc.
- Supports real-time, batch and timed data synchronization
- Effective, easy-to-use interface
- Capability to connect to SAP, Oracle directly and access the metadata (Connect-IT Data Mapper)
- Can read XML / XSD
- Stores Metadata information from SAP, Oracle, etc. so that mapping can be performed anytime

Connect-IT: Intelligent Data Mapper

The Connect-IT: Intelligent Data Mapper is a component which is used to extract metadata information from disparate data sources, map and transform data between one data source and another.

The Data Mapper can read XML schemas and have them as the source or target data source, thereby providing capability to map XML data to other proprietary data formats and vice versa.

The Data Mapper works in conjunction with the Connect-IT: Executor to synchronize business data in an enterprise or across enterprises thereby preserving the integrity of data across the marketplace.



The Illustration above shows the different steps that you would have to perform to map data between SAP and a ODBC data source. Although all the steps have not been shown here, it could clearly be inferred from here that the wizard provides a series of easy to use steps to map the data between any two data sources.

The flexible data mapper can be used to map SAP RFCs, Peoplesoft Business Objects, ODBC / JDBC data sources, XML / XSD schemas, Oracle databases, Stored procedures, flat files, etc. The data mapper stores the meta data information – apart from the Mapping information – in the configuration file, which can be modified “locally” without a direct connection to the data sources.

The configuration could be set to output the data in a supported intermediate format such as XML or CSV. It could also be setup for real time or near real time synchronization between the multiple enterprise systems.

The Data Mapper has the capability to transform or “massage” data with the help of transforms, which can run formulas against the input data to convert to the desired output format.

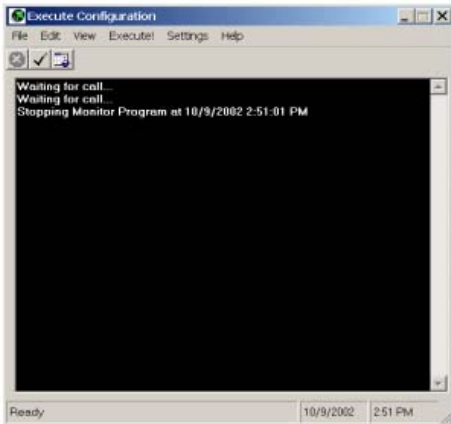
The “Scriptor” module provides the capability write scripts, which can perform complex data transforms when the same cannot be accomplished by simple transforms.

Connect-IT: Executor

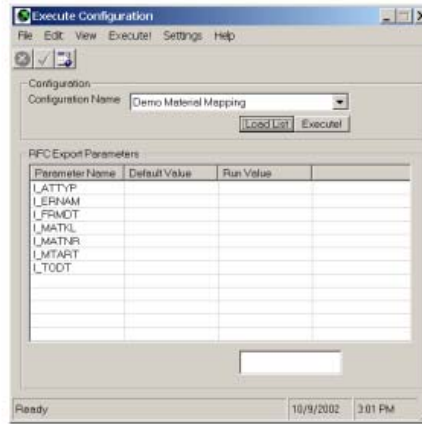
The Connect-IT: Executor component uses the Mapping created with the data mapper to execute the Configuration script, which would result in either the automatic synchronization of data between different enterprise systems or the creation of data files in some desired intermediate format.

The Connect-IT: Executor can be run in one of two modes: Single Mode and Monitor Mode. The Single Mode can be used to execute, say, a SAP Remote Function Call (RFC), to pull data from SAP to an ODBC data source on the Client. It could, on the other hand, be used to produce XML files with the requisite XSD or DTD, which could be subsequently used to feed any XML-aware data source.

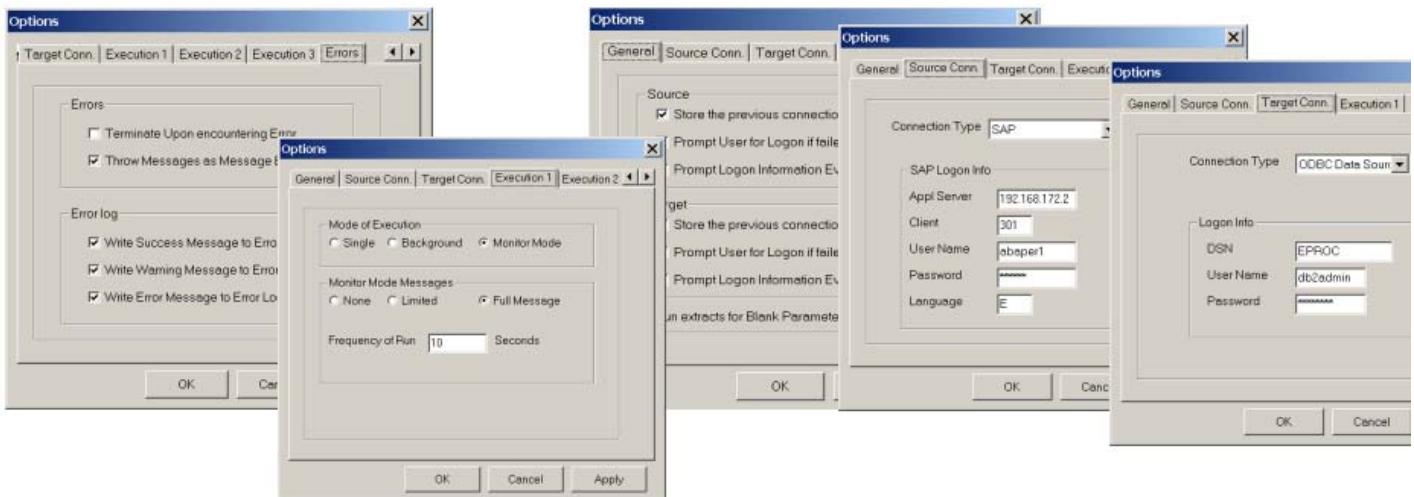
The Connect-IT: Executor uses technology approved and developed by the latest Microsoft, SAP and J2EE standards.



The Connect-IT Executor can be run in one of two modes: 1) The Monitor mode (above) and 2) Single Mode.



In single mode, a chosen Configuration file can be loaded and the Input parameters can be supplied to obtain the data from the Source Database, in this case, SAP R/3.



During Unattended Execution (Monitor Mode), all the options for execution, such as Interval, SAP Connection details, the default Mapping file to be used are set in the "Options" windows.